

North East Collaborative Foster Care Services Project
—
Stockton-on-Tees Borough Council Benchmarking

Paul Riley

Agenda

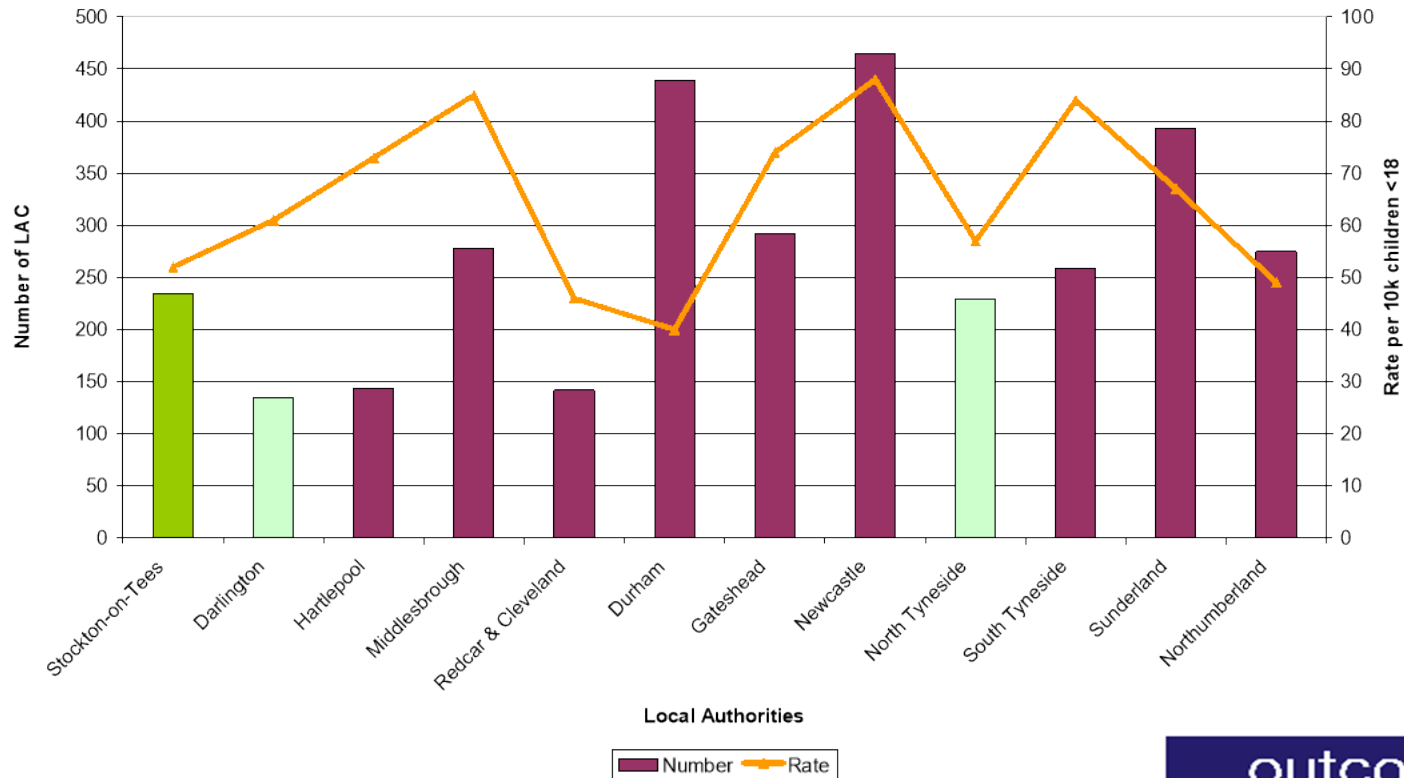
- Project Process.
- Looked After Children.
- Foster Carers.
- Service Delivery.
- Costs.
- Summary.

Project Process

- Questionnaire & analysis.
- Options workshops.
- Options appraisal report.
- Option feasibility workshop.
- Baseline report.
- Feasibility reports.

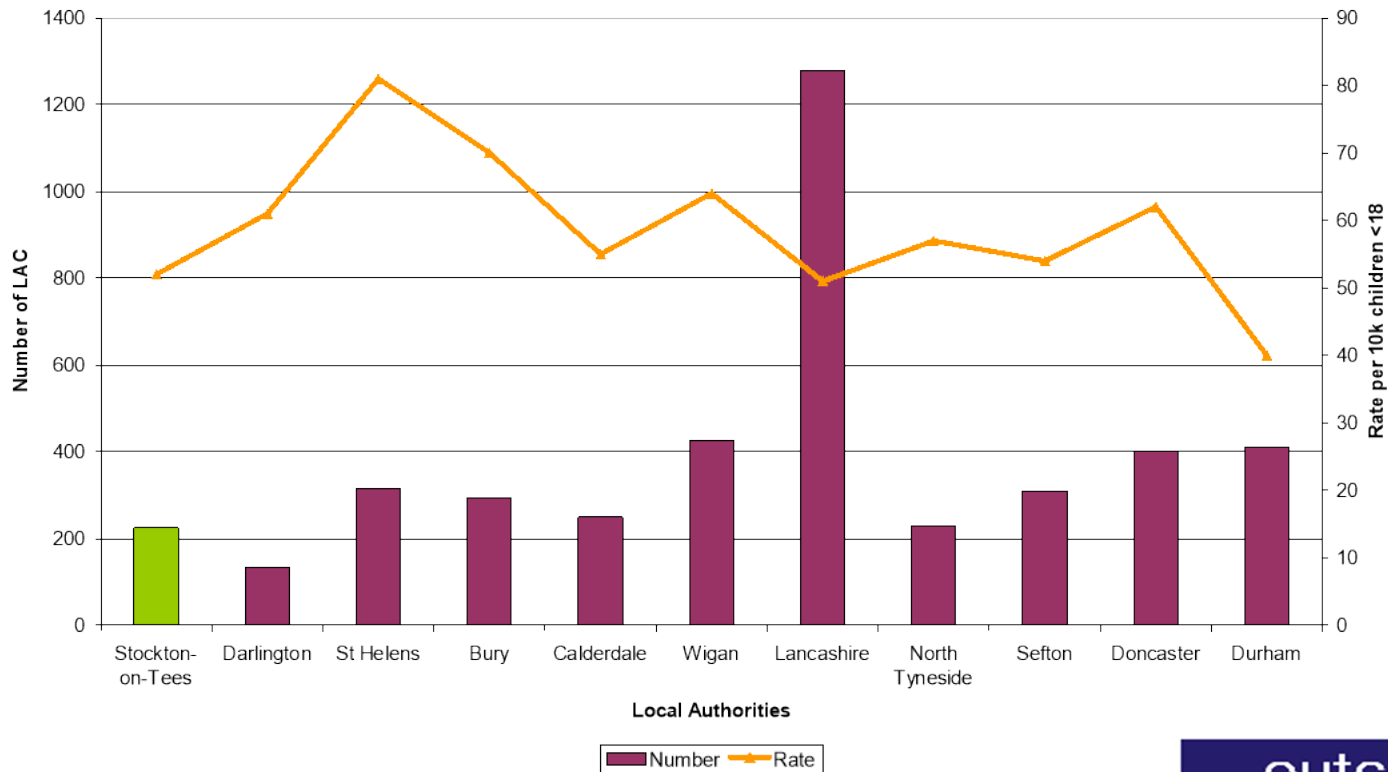
Looked After Children - 1

2008/09 Looked After Children Statistics for the North East Region



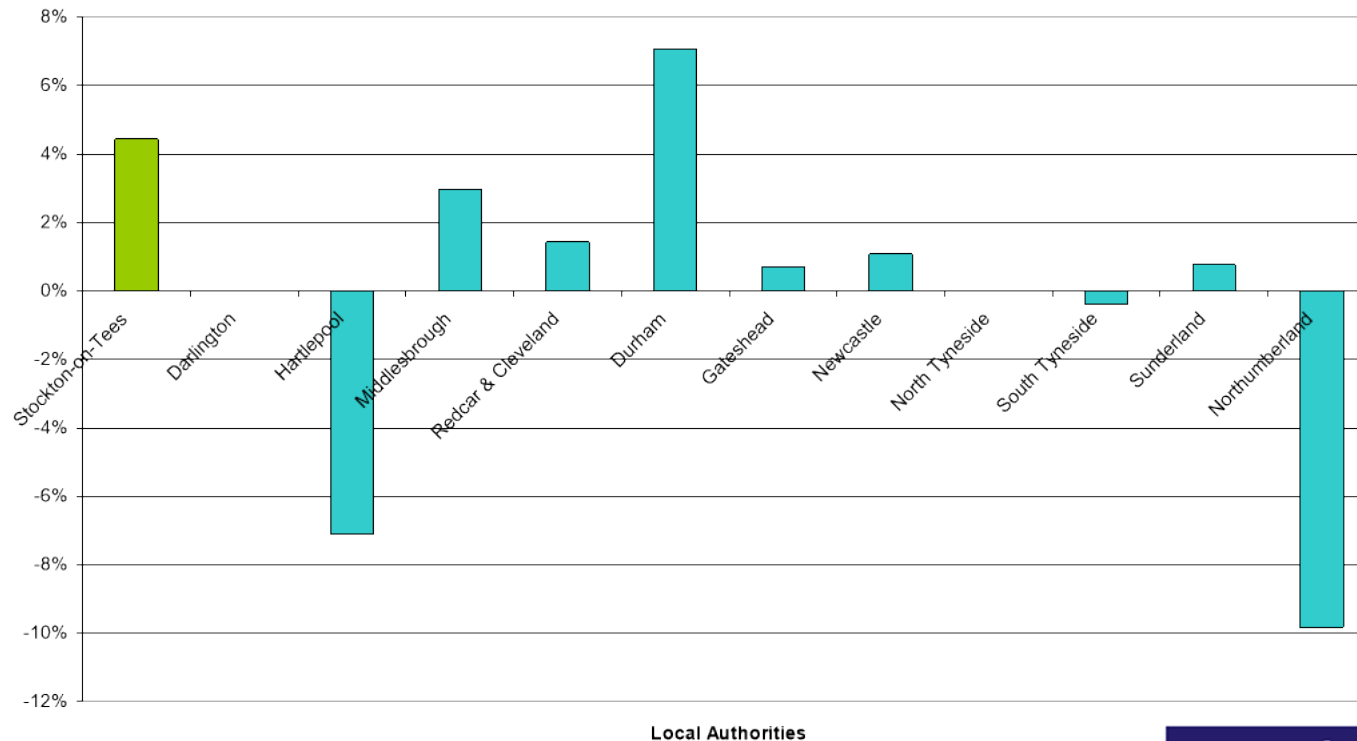
Looked After Children - 2

2007/08 Looked After Children Statistics for Statistical Neighbours



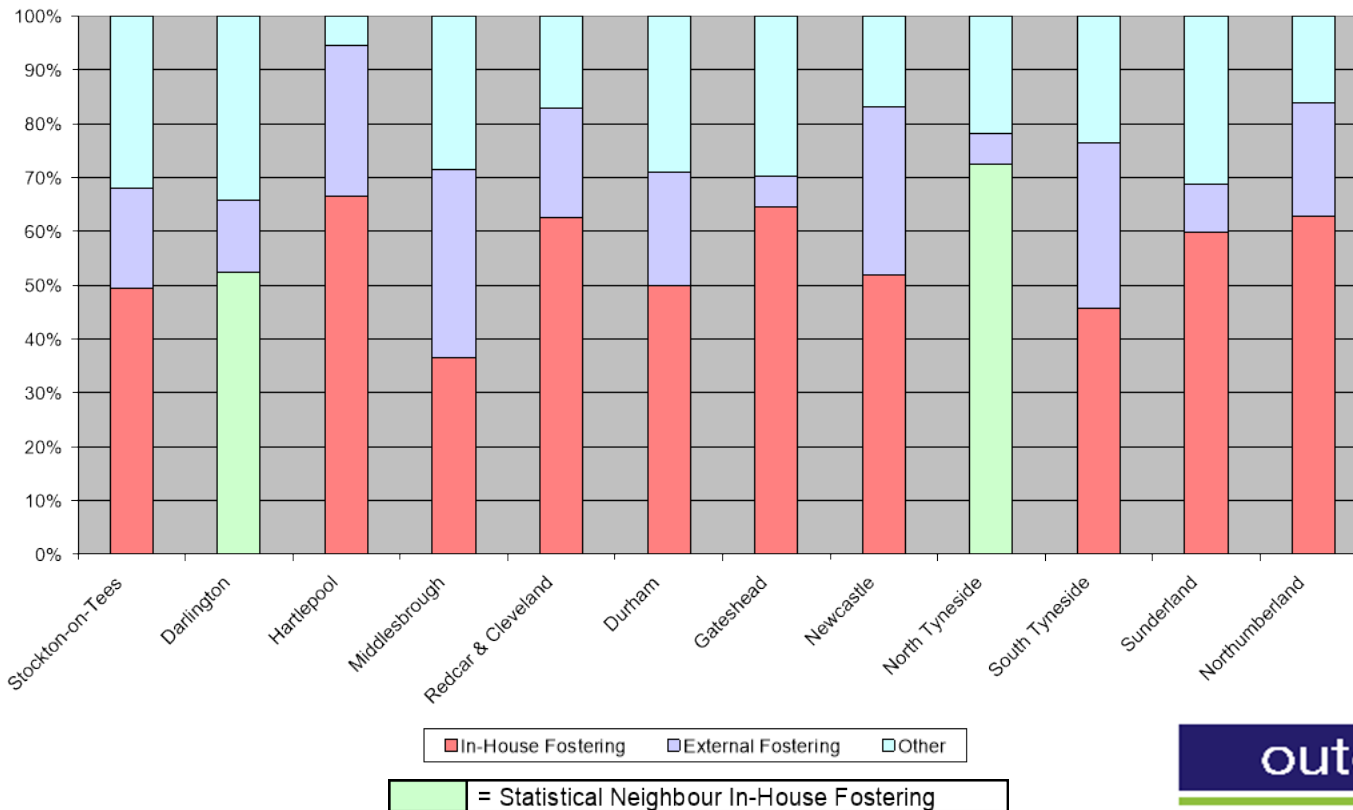
Looked After Children - 3

Change in LAC Statistics for the North East Region 2007/08 to 2008/09



Looked After Children - 4

Proportion of LAC Placements by Type - 2008/09 Data



Foster Carers - 1

2008/09 Data	Stockton-on-Tees	Darlington	Hartlepool	Middlesbrough	Redcar & Cleveland	Durham	Gateshead	Newcastle	North Tyneside	South Tyneside	Sunderland	Northumberland
Approved Foster Carer Households	90	59	80	85	74	183	157	201	139	99	196	144
Approved Foster Carers	8	6	17	2	15	30	22	55	17	16	18	17
Deregistered	9	6	12	13	17	25	9	29	22	16	30	28
Net Change	-1%	0%	6%	-13%	-3%	3%	8%	13%	-4%	0%	-6%	-8%

 = Statistical Neighbour

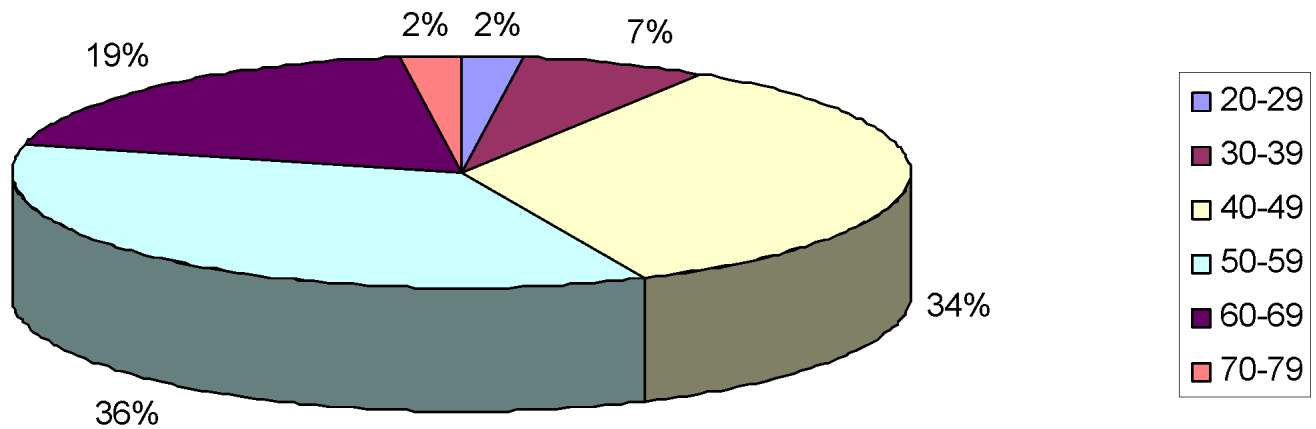
Foster Carers - 2

2008/09 Data	Stockton-on-Tees	Darlington	Hartlepool	Middlesbrough	Redcar & Cleveland	Durham	Gateshead	Newcastle	North Tyneside	South Tyneside	Sunderland	Northumberland
No. Enquiries	81	97	23	22	106	515	243	546	157	236	205	332
No. Enquiries per FC Household	0.9	1.6	0.3	0.3	1.4	2.8	1.5	2.7	1.1	2.4	1.0	2.3
Time to Assess FC	39	26	32	54	38	52	32	28	32	26	36	36
Approved Foster Carers	8	6	17	2	15	30	22	55	17	16	18	17
% Approved from Enquiry	10%	6%	74%	9%	14%	6%	9%	10%	11%	7%	9%	5%

 = Statistical Neighbour

Foster Carers - 3

Foster Carer Age Profile of 90 Approved Households



Fostering Service Ofsted Inspections

	<i>Stockton-on-Tees</i>	<i>Darlington</i>	<i>Hartlepool</i>	<i>Middlesbrough</i>	<i>Redcar & Cleveland</i>	<i>Durham</i>
Rating	Good	Outstanding	Good	Good	Outstanding	Outstanding
Year	2008	2008	2007	2007	2007	2007
	<i>Gateshead</i>	<i>Newcastle</i>	<i>North Tyneside</i>	<i>South Tyneside</i>	<i>Sunderland</i>	<i>Northumberland</i>
Rating	Good	Good	Outstanding	Good	Outstanding	Satisfactory
Year	2007	2009	2007	2007	2007	2009

 = Statistical Neighbour

Service Delivery

2008/09 Data	Stockton-on-Tees	Darlington	Hartlepool	Middlesbrough	Redcar & Cleveland	Durham	Gateshead	Newcastle	North Tyneside	South Tyneside	Sunderland	Northumberland
Ave SSW Caseload	16	15	13	14	10	10	17	11	12	14	22	16
Post-Approval Carer Training Days	279	116	64	n/a	202	870	540	965	n/a	n/a	1650	660
Respite Provision	25	48	Carers	n/a	n/a	Carers	Carers	1577	450	Carers	2580	336
Out of Hours Support	EDT	EDT	EDT	EDT	EDT	EDT	EDT + Foster Specific	EDT + Foster Carer Specific	EDT + Foster Specific	EDT + Foster Specific	EDT	EDT + Foster Specific

 = Statistical Neighbour

Costs

- Foster Carer Allowances & Fees:
 - Stockton-on-Tees at higher end & fewer levels.
 - 9 LAs in North East pay at least FN recommended levels.
 - 3 LAs pay less than National minimum weekly allowance.
- Average cost to recruit foster carers:
 - North East Average = £6k Tees Valley Average = £3.6k
 - Stockton-on-Tees = £2k .
- Cost per in-house fostering placement:
 - Average across North East = £300 p.w.
 - Stockton-on-Tees = £350+ p.w.
 - Stockton - 85% carer costs 15% service cost.

Summary - 1

- Stockton-on-Tees LAC:
 - Below average LAC rate per 10k children <18.
 - Above NE average LAC increase over last year.
 - Lower than NE average of LAC placed with in-house fostering service.
 - Proportion of LAC placed externally = North East average.
- Stockton-on-Tees Foster Carers:
 - Net foster carer numbers static, but 10% churn, which is average for North East.
 - NE average number of enquiries about fostering, and above average conversion to approval, but longer than average time to recruit and assess.

Summary - 2

- Stockton-on-Tees Fostering Service:
 - Average NE caseloads for social workers.
 - Limited, below average respite provision.
 - Above average training provision.
 - Typical EDT cover rather than good practice targeted support.
- Stockton-on-Tees Fostering Costs:
 - Foster carer payments at higher end for North East.
 - Appear below average spend on carer recruitment & assessment.
 - Service cost low proportion of overall in-house placement cost.
 - Above NE average for placement cost – may be lack of critical mass issue.